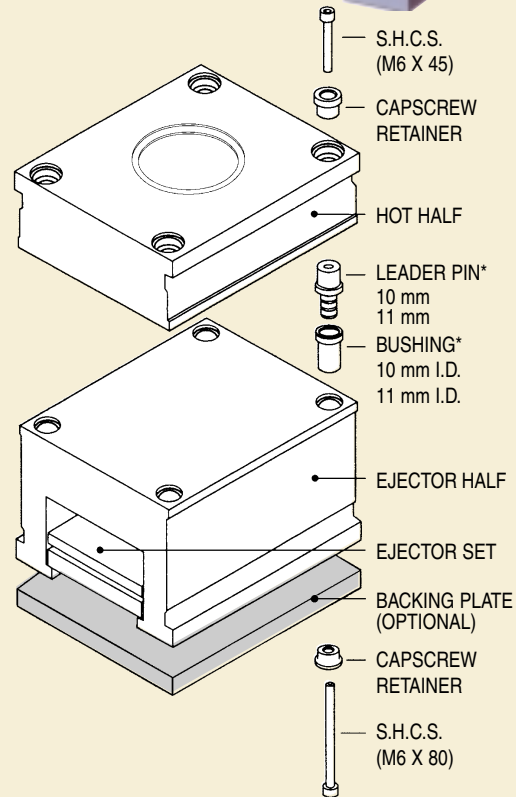
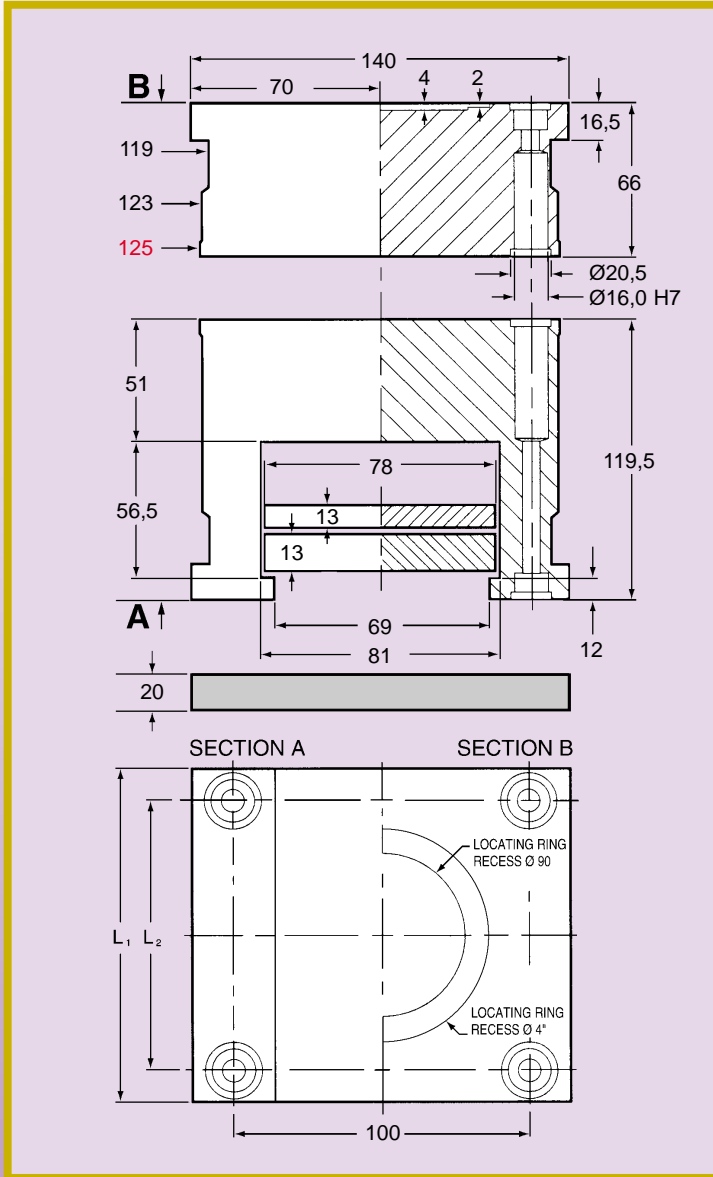




QUICKSET ALUMINUM MOLD BASES 125 SERIES



CATALOG NUMBER	L ₁	L ₂	BACKING PLATE	APPROX. NET WEIGHT	
				kg	lb.
A1251	125	94	BP1251	12	26
A1252	156	125	BP1252	14	31
A1253	196	165	BP1253	16	35
A1254	246	215	BP1254	18	40
A1255	296	265	BP1255	22	49

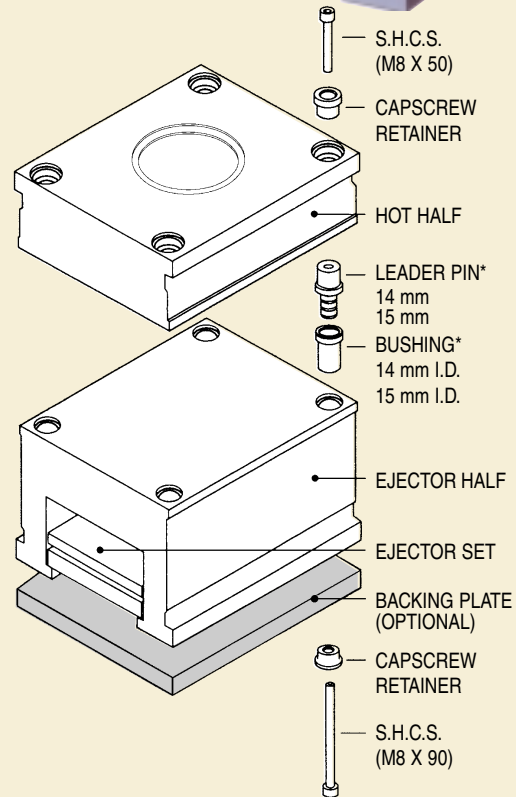
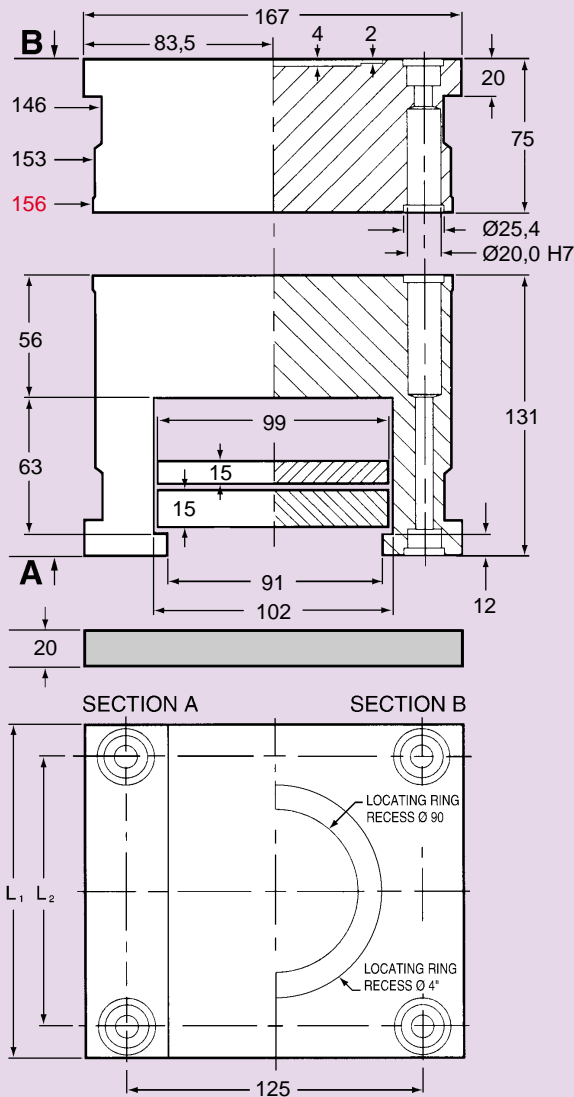
Material: HD .87-7022 T651
 Tensile strength: 490-530 N/sq mm
 Hardness: 150 HB
 Quicksets are supplied fully machined with four leader pins, bushings, capscrew retainers, capscrews and ejector set.
 NOTE: Quicksets are supplied unassembled.

* QUICKSET mold bases do not offset a leader pin and bushing assembly. **One set** of leader pins and bushings provided with this mold kit will be **10 mm diameter** or **11 mm diameter**. Mating of the diameters should be checked prior to final assembly.

ITEM	CATALOG NO.
CAPSCREW RETAINER	CR125
LEADER PIN - 10 mm	LP125-10
LEADER PIN - 11 mm	LP125-11
BUSHING - 10 mm	BU125-10
BUSHING - 11 mm	BU125-11



QUICKSET ALUMINUM MOLD BASES 156 SERIES



CATALOG NUMBER	L ₁	L ₂	BACKING PLATE	APPROX. NET WEIGHT	
				kg	lb.
A1561	156	120	BP1561	16	35
A1562	196	160	BP1562	19	42
A1563	246	210	BP1563	23	51
A1564	296	260	BP1564	26	57
A1565	346	310	BP1565	29	64
A1566	396	360	BP1566	31	68

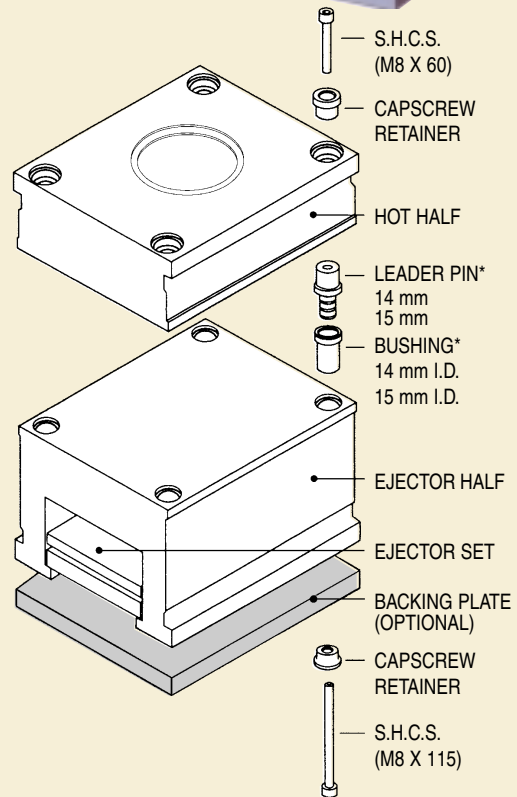
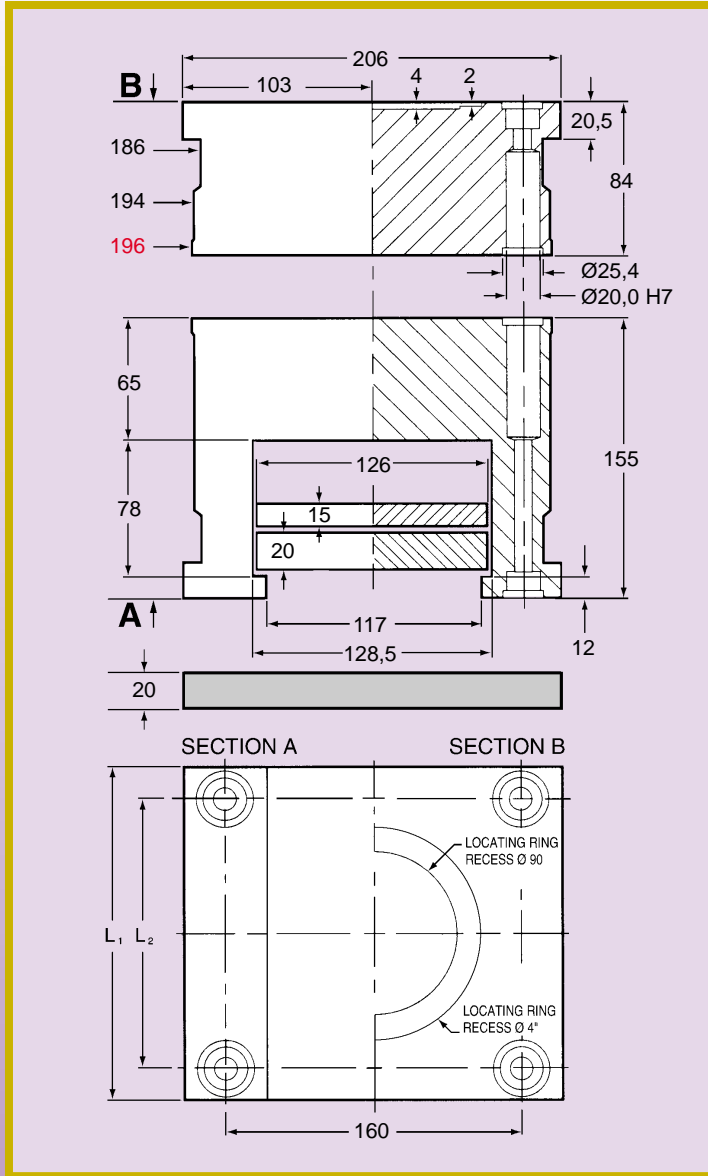
- Quickset aluminum molds are 1/3 the density of steel molds.
- Handling is easier and freight costs can be significantly reduced.
- Machining, EDM and polishing are considerably faster.
- Using electrodes with reduced current and spark gap will result in improved surface finishes.

* QUICKSET mold bases do not offset a leader pin and bushing assembly. **One set** of leader pins and bushings provided with this mold kit will be **14 mm diameter or 15 mm diameter**. Mating of the diameters should be checked prior to final assembly.

ITEM	CATALOG NO.
CAPSCREW RETAINER	CR156
LEADER PIN - 14 mm	LP156-14
LEADER PIN - 15 mm	LP156-15
BUSHING - 14 mm	BU156-14
BUSHING - 15 mm	BU156-15



QUICKSET ALUMINUM MOLD BASES 196 SERIES



CATALOG NUMBER	L ₁	L ₂	BACKING PLATE	APPROX. NET WEIGHT	
				kg	lb.
A1961	196	160	BP1961	20	44
A1962	246	210	BP1962	24	53
A1963	296	260	BP1963	28	62
A1964	346	310	BP1964	32	71
A1965	396	360	BP1965	36	79
A1966	446	410	BP1966	40	88
A1967	496	460	BP1967	44	97

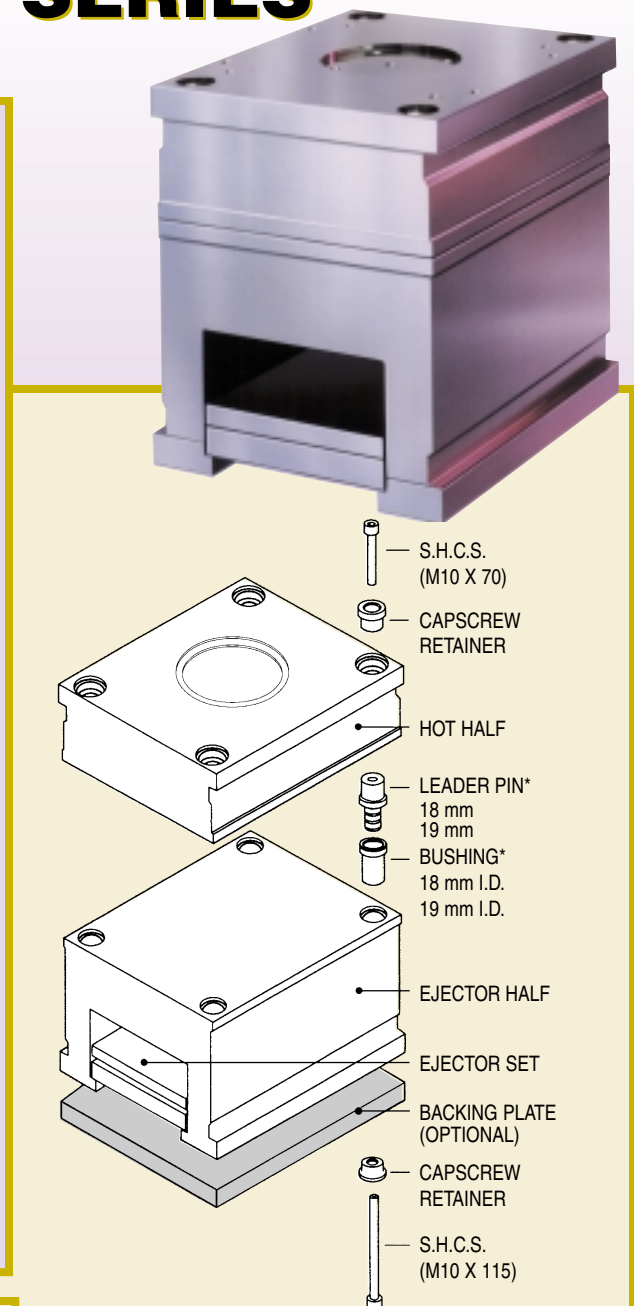
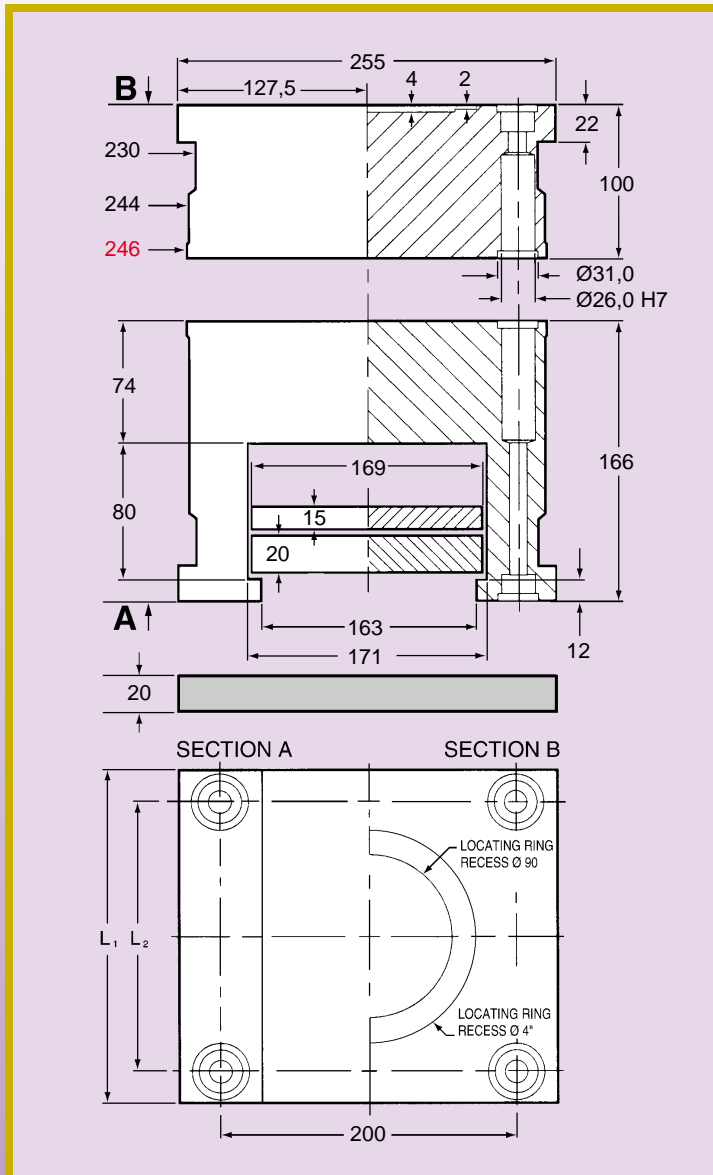
- The heat transfer characteristics of aluminum promotes faster cycle times.
- Quicksets can be ground, welded and textured.
- When reaming holes, especially small diameters in aluminum, it is advised to be oversize by +.01 mm to +.02 mm.

* QUICKSET mold bases do not offset a leader pin and bushing assembly. **One set** of leader pins and bushings provided with this mold kit will be 14 mm diameter or 15 mm diameter. Mating of the diameters should be checked prior to final assembly.

ITEM	CATALOG NO.
CAPSCREW RETAINER	CR196
LEADER PIN - 14 mm	LP196-14
LEADER PIN - 15 mm	LP196-15
BUSHING - 14 mm	BU196-14
BUSHING - 15 mm	BU196-15



QUICKSET ALUMINUM MOLD BASES 246 SERIES



CATALOG NUMBER	L ₁	L ₂	BACKING PLATE	APPROX. NET WEIGHT	
				kg	lb.
A2461	246	200	BP2461	32	71
A2462	296	250	BP2462	40	88
A2463	346	300	BP2463	49	108
A2464	396	350	BP2464	57	126
A2465	446	400	BP2465	65	143
A2466	496	450	BP2466	73	161
A2467	546	500	BP2467	81	179

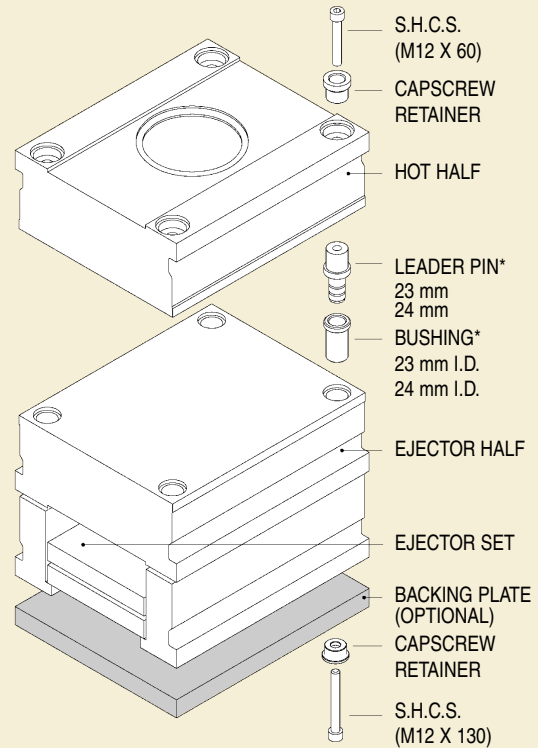
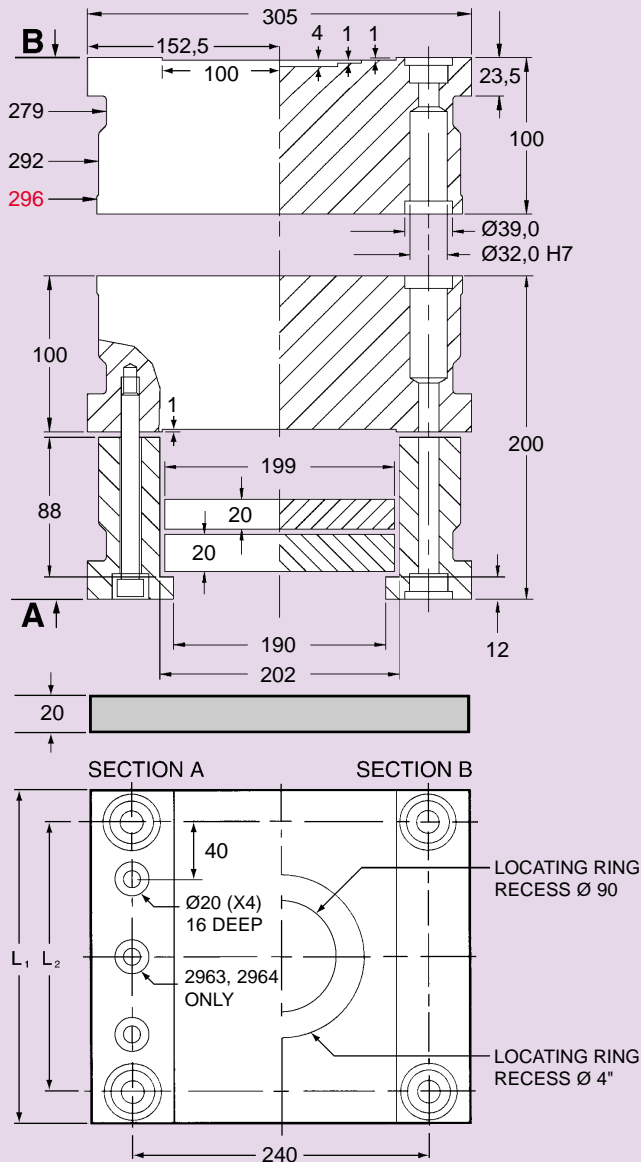
* QUICKSET mold bases do not offset a leader pin and bushing assembly. **One set** of leader pins and bushings provided with this mold kit will be **18 mm diameter or 19 mm diameter**. Mating of the diameters should be checked prior to final assembly.

ITEM	CATALOG NO.
CAPSCREW RETAINER	CR246
LEADER PIN - 18 mm	LP246-18
LEADER PIN - 19 mm	LP246-19
BUSHING - 18 mm	BU246-18
BUSHING - 19 mm	BU246-19

- When installing leader pins and bushings into the mold, it is advised that the press fit be lubricated. This will eliminate the potential bonding of the aluminum to the steel when pressure is applied.
- CAD files are available from the Almo web site or on CD from DMS.



QUICKSET ALUMINUM MOLD BASES 296 SERIES



CATALOG NUMBER	L ₁	L ₂	BACKING PLATE	APPROX. NET WEIGHT	
				kg	lb.
A2961	296	240	BP2961	72	159
A2962	396	340	BP2962	102	225
A2963	496	440	BP2963	123	271
A2964	596	540	BP2964	144	318

* QUICKSET mold bases do not offset a leader pin and bushing assembly. **One set** of leader pins and bushings provided with this mold kit will be **23 mm** diameter or **24 mm** diameter. Mating of the diameters should be checked prior to final assembly.

ITEM	CATALOG NO.
CAPSCREW RETAINER	CR296
LEADER PIN - 23 mm	LP296-23
LEADER PIN - 24 mm	LP296-24
BUSHING - 23 mm	BU296-23
BUSHING - 24 mm	BU296-24

MANUFACTURED BY:

ALMO
www.almo.uk.com